

DIN 48×96mm

- Speed display type, 4-digit and 6 digit mode selection.
- The setting of p.p.r (pulses per revolution) , achieve the minimum speed can be measured.
- N9Z-6 tachometer with RPS option can be used to measure the pulse frequency Hz.
- Decimal point automatically shift.

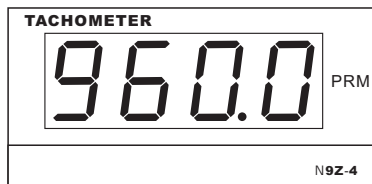
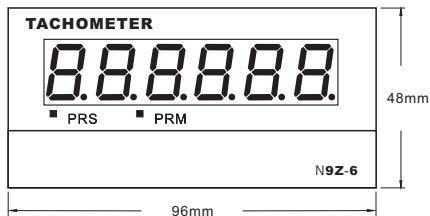


⚠ Please refer to the manual to use, to ensure product safety and proper use.

■ Specification

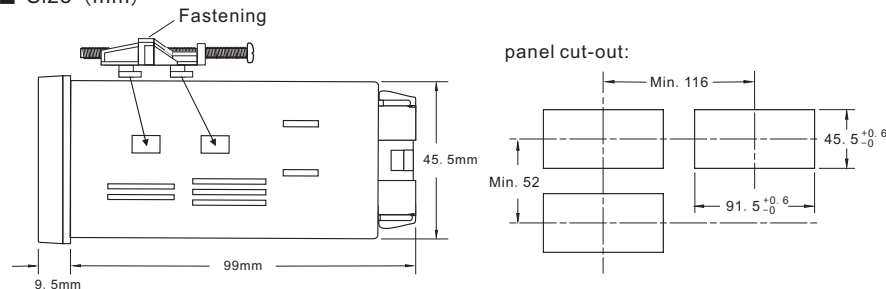
Item no	N9Z-4	N9Z-6
Category	4-digit speed display type	6-digit speed display type
Power supply	1:AC100 ~ 240V 50/60HZ 2:AC/DC12 ~ 24V	
Voltage range	85 ~ 110%	
Sensor power	5VA(AC240V),3.2VA(DC24V)	
Display and range	LED (0.0 ~ 9999)	LED (0.0 ~ 999999)
Frequency response	1KHz	
Range of measurement	0.1HZ ~ 1KHz	
Range of rotation	3 - 9999rpm (1 pulse / rotation)	6~60000rpm (1 pulse / rotation)
Measurement accuracy	±0.1%FS.±1digit以下 (23±5°C)	
Pulse measurement	Cycle measurement mode (1 s conversion time)	
Input signal	PNP ("H" : DC4.5-30V,"L" : DC0-2VDC)	
Sensor power	12VDC ±10% 100mA Max	
Use of the environment	Temperature:-10 ~ +60°C(Do not freeze),Humidity:25 ~ 85%RH	

■ Panel shape

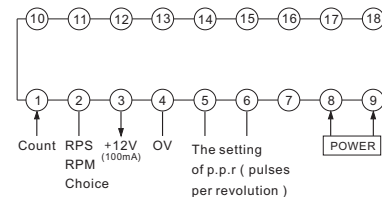


(1)

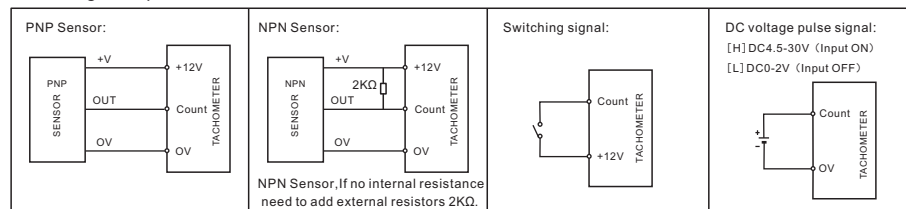
■ Size (mm)



■ Wiring diagram



Count signal input connection:



■ Function instructions

The setting of P.P.R	Auto-Zero time (seconds)	Minimum speed	Connected by wiring pin
1/60	2	0.5	④ ⑤ ⑥ (4、5、6 All connections)
1/30	3	0.6	④ ⑤ ⑥ (4、6 Connection)
1/10	4	1.5	④ ⑤ ⑥ (4、5 Connection)
1/1	10	6	④ ⑤ ⑥ (All is not connected)

- 1:N9Z-4 is the economical meter,it just only has "R.P.M"function.N9Z-6 "R.P.M" and "R.P.S" functions can be set,"R.P.S" need to connect the 2,4."R.P.M" not connected 2,4.
- 2:At the low rate(less 10 R.P.M),if adapt one signal per revolution,then the sampling time will be too long(over 6 seconds)that the meter may judge the operation holding still and reset to zero.Thus,try to increase the sensing time(eg.use the disk)and then match P.P.R.if operate at low raet.After that,all of the problems can be overcome and also can raise th response speed.
- 3:Change the instrument function, need to re-power, to take effect.

(2)